

Higher Efficiency
Better Surface Finish
Free from casting defect
Faster Deliveries



Investment Casting



Casing :

Top Centre line discharge, Self-venting casing, arranged for back pull-out fully confined PTFE/Viton gasket . Foot support under casing for maximum resistance to misalignment & distortion from pipe loads.

Impeller :

Open and close Impeller is tightened on shaft with nut threads are sealed by a PTFE 'O' ring. Impeller nut assures non opening of impeller with wrong rotation of motor. All impellers are statically and dynamically balanced.

Stuffing box cover :

Encloses back of casing and contains stuffing box chamber. Cover is fastened to frame. Cover can be supplied with jacket for cooling stuffing box chamber in high temperature services. Jacket can also be used for heating viscous or high freezing point liquids.

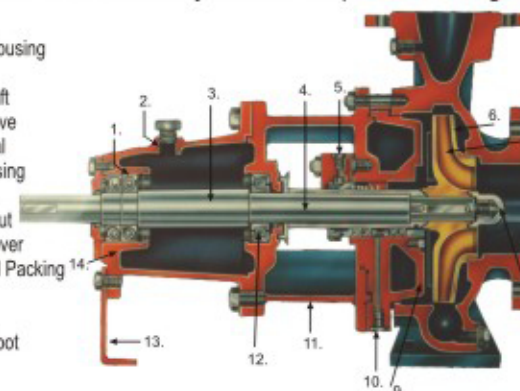
Packed box has 4 rings of packing and a lantern ring. Quench gland with taps and an auxiliary ring of packing is standard. Gland is split for easy removal. Tapped openings to lantern ring permit "in and out" sealing, external flushing or lubrication as required.

Stuffing box is completely machined for mechanical seal installation for inside, outside, unbalanced, balanced, single seals.

Bearing frame :

sturdy cast iron construction provides rigid bearing alignment and shaft support. Contains large oil, reservoir with water jacket. Oil, level is maintained by constant level oiler with visible oil supply. Oil seals on each end and oil breather fully protects oil form contamination while allowing for expansion or contraction of air caused by ambient temperature change.

1. Bearing Housing
2. Oil Vent
3. Pump Shaft
4. Shaft Sleeve
5. Mech. Seal
6. Volute Casing
7. Impeller
8. Impeller Nut
9. Casing Cover
10. Soft Gland Packing
11. Adapter
12. Bearing
13. Support Foot
14. Bearing



Shaft :

A single piece shaft is designed for 0.05 mm maximum deflection at stuffing box face. All critical surfaces ground to less than 0.8 micron.

Shaft Sleeve :

Renewable shaft sleeve is positive driven, key way type with one end free to expand with temperature variations. PTFE'O' - ring prevents leakage under sleeve. Sleeve permits application of inside balance mechanical seals where required. Sleeve is hard chrome plated & ground for maximum seal & gland life.

Bearings :

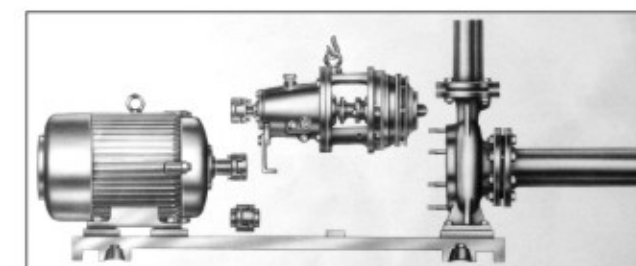
Inboard bearing is pressed on shaft and is free to float axially in frame. Outboard bearing is shouldered and locked on shaft with locknut and star washer and in bearing housing to carry radial and any unbalanced trust load. All bearing fits are precision board

Base plate :

M. S. fabricated drip rim type. Only one size of base plate accommodate all pump sizes and all applicable IS or IEC frame size motors.

Coupling :

A spacer type coupling is provided to take full advantage of the back pull-out feature.



Backpull-Out Design :

The space necessary to withdraw the pump rotating element is obtained by removing the coupling spacer. After dismantling of the casing cover, support foot, cooling water connections, heating connections and sealing liquid (if any) the complete pump rotating element is withdrawn from the pump casing.

The pump casing is left in the pipe work. The motor remains fixed to the base plate. The pump rotating element can easily be dismantled into its components. After re-assembly no time consuming re-alignment is necessary.

MODEL	HP/ K.W.	Size																
			6	7	8	9	10	11	12	13	14	16	18	20	22	24	26	
MOSS 11/0.5	0.5 / 3.7	25 x 25	110	105	98	90	84	74	64	54	40	25						
MOSS 11/1	1.0 / 0.75	25 x 25											148	140	135	118	90	
MOSS 22/1	1.0 / 0.75	50 x 50	430	410	390	350	310	320	325									
MOSS 22/2	2.0 / 1.5	50 x 50							400	380	350	310	270	200				



(Regd. Office)

Moniba Anand Electricals Pvt. Ltd.

Plot No.1, Near Raheja Vihar, Off Saki Vihar Road,
Chandivali, Andheri (East), Mumbai - 400 072.
Tel. : 2857 1028 / 2857 3135 , Fax : 0091-22-2857 3135

Distributor :

E-mail : mail@moniba.net, Website : www.moniba.net



Air Operated Double
Diaphragm Pump



Hose Pump



Polypropylene
Chemical Pump



Magnetic Driven
Pump



Drainex Pump